



Learn More!

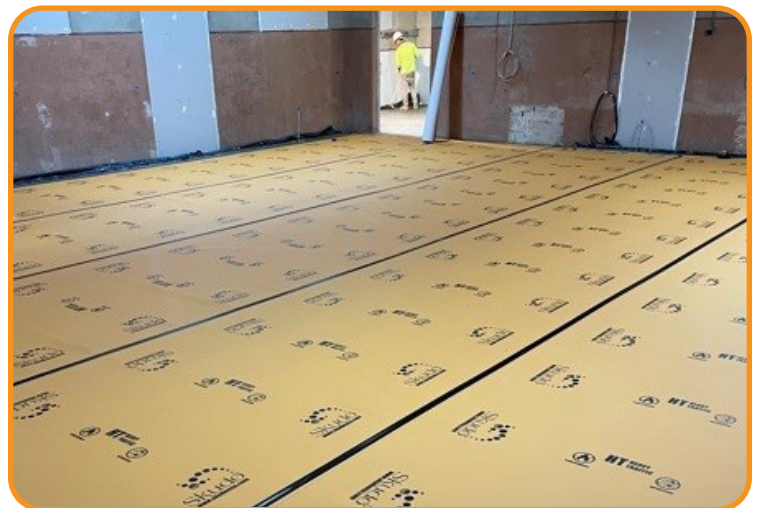


LOOSE LAY Application

(Application without Base Coat)

IMPORTANT: As freshly placed concrete can be subject to hydration marks on the surface from inconsistent/uneven curing, it is recommended to wait a minimum of at least ten days before installation. Examples of variables that affect the covering timing are slab thickness, mix design, location, and weather. For assistance, please reach out to your local Skudo rep for clarification.

1. Ensure your surface is clean and dry before you lay Skudo HT Commercial Mat.
2. Roll out in a straight line to create the first row.
3. When starting the second row, ensure to overlap the first row of matting, using the dotted lines as a guide.
4. Tape along the seams to secure the mat to itself, preventing dust, dirt, and debris from getting in underneath. Do not tape the edges to the substrate.
5. Complete each row as above until your surface is covered.
6. For additional impact protection, we recommend placing SkudoBoard over the top of the HT Commercial Mat. When placing the SkudoBoard over the HT Commercial Mat, run the boards in the opposite direction or in a brick pattern to not line up the seams with those of the mat.
7. We also recommend sufficiently securing/weighing down the mat/board around the perimeter of the protected area when used externally to minimize risk of displacement due to wind and extreme weather events.
8. When installing loose lay (dry lay) over new concrete, avoid excessive taping on the overlap of the matting, to assist with minimizing the possibility of hydration marks.



Innovative, purpose-built surface protection systems. This is all we do.

www.skudousa.com 1-888-SKUDO-11 (1-888-758-3611)

V 1.0 5.25.23