



**SIDE ONE**

## After Application Maintenance & Repair: Instructions



**Inspect the HT Commercial System daily for rips / tears. Repair if necessary.**

- If the HT Commercial System has lifted or torn, apply additional Base Coat underneath and reset the tear.
- If an area of the HT Commercial System needs to be replaced, carefully cut out and patch with a new piece of the HT Mat that overlaps approx 4" on each side. Apply Base Coat directly on the surface and on the surrounding HT Mat in order to adhere the patch overlap.



**Remove standing water by squeegee or by broom. Failure to do so could cause the HT Commercial System to loosen or release from concrete.**

- Do not work on soaked mat with machinery as it could break the adhesive bond. Wait until fully dry.



**If the area becomes flooded, remove water immediately and restrict machine usage on the HT Commercial System until it dries (24 hours).**

- SkudoBoard installed over the HT Mat will provide significantly greater protection in wet and heavy use areas.



**If seams start to lift, repair immediately with additional Base Coat.**



**For areas with heavy machinery, place SkudoBoard on top of the HT Commercial System while machines are in use.**



**To keep clean, simply sweep and clean the HT Commercial System as you would with any other area.**

**Innovative, purpose-built surface protection systems. This is all we do.**

[www.skudousa.com](http://www.skudousa.com) 1-888-SKUDO-11 (1-888-758-3611)

V1.0 9.22.20



**SIDE TWO**

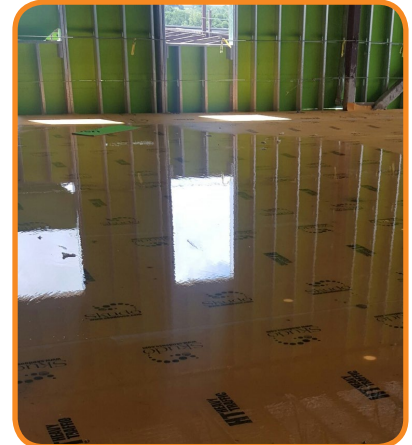
## After Application Maintenance & Repair: Examples



Use SkudoBoard over HT Commercial areas with high traffic, heavy machinery



Sweep or squeegee standing water off the HT Commercial System



If area is flooded, remove water and allow to dry for 24 hours before machine use



Sweep to keep clean



Inspect daily for tears and patch/repair if needed

**Innovative, purpose-built surface protection systems. This is all we do.**

[www.skudousa.com](http://www.skudousa.com) 1-888-SKUDO-11 (1-888-758-3611)

V1.0 9.22.20