



One-step Temporary Surface Protection

## Heavy Traffic (HT) Tack-Mat Project Examples



Lobbies/Offices



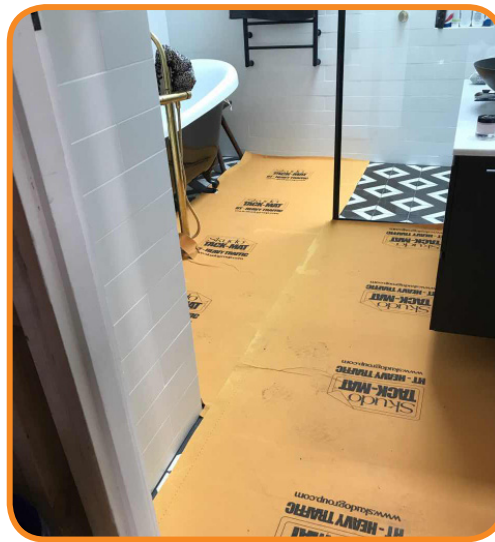
Stairs



Staging Areas



Heavy Traffic Walkways



Remodeling



New Construction

\*Only use Skudo Tack-Mat on sealed hardwood with a hard wearing factory finished surface (eg : Aluminum Oxide). If in question, please contact Skudo for suitability testing.

\*\*Please see your Skudo Representative to determine which version of Tack-Mat is best suited for your project.

**DISCLAIMER:** Skudo Tack-Mat is intended for interior use only and is not suited for areas that will be exposed to inclement weather and wind.

**NOTE:** All adhesives have the potential to lift finished coatings or paint depending on the condition and age of the surface. Testing a small piece in a non-critical area will help you judge suitability for use.