



# EDGE PROTECT



## One-step Temporary Surface Protection

### Description

Skudo's New Edge Protect Tack-Mat offers the same outstanding protection of Skudo Construction Tack-Mat, but has been specifically designed for easy application around edges. Edge Protect is perfectly sized to protect indoor framing, windows, ledges, railing, door jams, and more. No need to cut down rolls, eliminating excess waste. Like all Skudo Tack-Mat products, Edge Protect features a unique self-stick surface - simply peel the backing paper and apply.

Skudo Edge Protect provides interior surface protection for commercial and residential projects for up to 12 months.

### Benefits

- Strong bond with the surface blocks any dirt and debris from ever coming into contact with the protected substrate
- Impact protection from carts, ladders, tools, and more
- Stain proof protection from small spills of chemicals, solvents, paints, oils etc.
- Seamless and stationary - won't move out of place
- Can be used in any temperature : -20°F to +200°F
- Easy to adjust or inspect surface, simply peel up and re-position

### Uses

Protects all edges during construction / remodeling including:

- Glass & Metal framing, ledges, and railing
- Ceramic and Porcelain Tile
- Marble, Granite, and Stone\*
- Vinyl, Laminate, and Hardwood\*

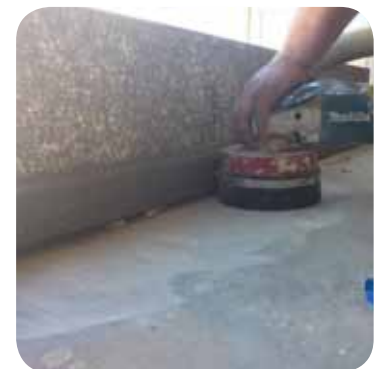
\*Please see "Limitations" section (pg 2)



Perfect for framing



Peel up and re-apply



Protect edges from damage



Durable





# EDGE PROTECT



## One-step Temporary Surface Protection

### Application & Removal

All Skudo Tack-Mat products are easily applied by peeling off the release paper and pressing down onto the surface. Simply peel up Tack-Mat leaving a clean, undamaged surface.



For detailed step-by-step Tack-Mat application directions and video, please visit our website:  
[www.skudousa.com/how-to-apply/skudo-tack-mat/](http://www.skudousa.com/how-to-apply/skudo-tack-mat/)



Easy Application

### Edge Protect Tack-Mat Available Sizes & Product Data

- **Dimensions: 8.5"W x 50'L**
- Square Footage: 33.3 sq. ft./roll
- Product #TM-EP-8i-50
- Color: Grey
- Weight: 3.5 lbs./roll
- Thickness: 1/16"
- **Dimensions: 12"W x 82'L**
- Square Footage: 82 sq. ft./roll
- Product #TM-EP-12i-82
- Color: Grey
- Weight: 8.5 lbs./roll
- Thickness: 1/16"

### Limitations

- **INTERIOR USE ONLY.** Skudo Tack-Mat is intended for interior use only and is not suited for areas that will be exposed to inclement weather and wind. If exposure to the elements is a concern, Skudo recommends the Heavy Traffic (HT) Commercial Mat System. Please consult with your Skudo representative for more details.
- **All adhesives have the potential to lift finished coatings or paint depending on the condition and age of the surface.** Testing a small piece in a non-critical area will help you judge suitability for use.
- If applying to hardwood flooring, only use Skudo Tack-Mat on sealed hardwood with a hard wearing factory finished surface (eg : Aluminum Oxide). If in question, please contact Skudo for suitability testing.
- If applying vertically, space must be conditioned. Humidity can cause this system to release from the substrate.
- **Skudo Tack-Mat should NOT be applied to:**
  - Polished Concrete
  - Concrete that has not fully cured
  - Limestone
  - Non-factory finished hardwood flooring
  - Any exterior surfaces

**Please consult with your Skudo representative to determine which Skudo product is best for your project.**